

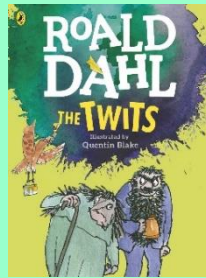


# Rivers



## English

- Studying *The Twits* by Roald Dahl.
- Describing characters' appearances and personalities.
- Storyboarding new ideas.
- Reporting dialogue.
- Creating a rhyming poem; looking at rhyme schemes and scansion.
- Writing formal letters.



## Maths

- Measuring length with standardised units.
- Equivalent lengths in metres and centimetres.
- Comparing and calculating with lengths.
- Measuring and calculating perimeter.
- Fractions – recognising halves, quarters and thirds.
- Fractions – finding halves, quarters and thirds.
- Unit and non-unit fractions.
- Simple equivalent fractions.

## Science

- The formation and properties of rocks.
- The formation and properties of soils.
- The origin and formation of fossils.



## Topic

- The course of the river from source to mouth.
- Features of rivers.
- Uses of rivers.
- Northumbrian rivers and their nearby features.
- The role of rivers in the water cycle.

## RE

- The importance of Good Friday for Christians.
- Representations of The Last Supper and The Crucifixion.
- Symbolism and ritual.
- Showing love and gratitude to those we feel are special.

## Art and Design

- JMW Turner's *Warkworth Castle*.
- Landscape paintings.
- Watercolour paints and washes.
- Painting scenes from life.



## Design Technology

- Junk modelling.
- Designing and creating 3D representations.
- Moulding and shaping materials.
- Adapting designs.
- Labelling designs/models.

## PSHE

- Healthy me.
- The importance of exercise.
- Food labelling and what it tells us.
- The importance of safety, including online safety.
- Respecting myself and others.
- Commando Joe -

## PE

- Invasion games.
- Commando Joe -

## Music

- Developing our skills in playing the baritone.

## Computing

- Coding: animations using Scratch.



## Homework

- Reading to an adult for ten minutes each day.
- Learning spellings for a weekly test on *Spelling Shed*.
- Practising times tables for a weekly test on *Times Table Rockstars*.



shutterstock.com • 568751782